

ESD 114 - Proposed Board Districts as Approximated Using Census 2020 Geography

- 1st District
- 2nd District
- 3rd District
- 4th District
- 5th District
- 6th District
- 7th District

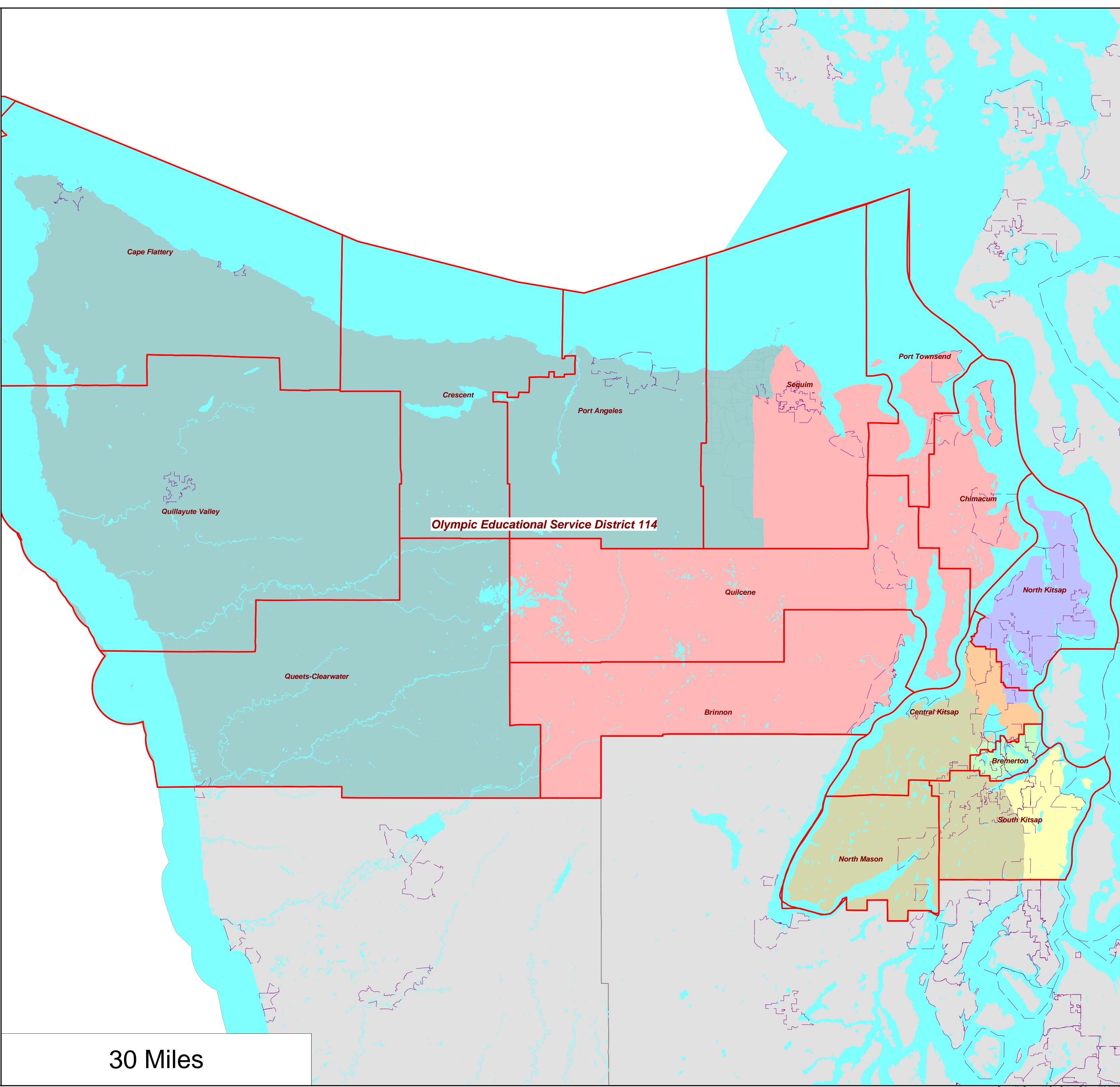
City Limits



School District Outline



District Outline



05/09/2022

ESD 114 **District Summary Report**

1

Director District Number	Ideal Population	Total Population	Deviation from Ideal	% Deviation from Ideal	White Population	Hispanic Origin (of any race)	Non White & Mixed
1st	53,830	53,549	-281	-0.52	41,645	4,071	11,904
2nd	53,830	53,631	-199	-0.37	36,790	6,655	16,841
3rd	53,830	53,153	-677	-1.26	35,266	5,789	17,887
4th	53,830	53,177	-653	-1.21	41,810	4,043	11,367
5th	53,830	55,009	1,179	2.19	47,678	2,441	7,331
6th	53,830	53,172	-658	-1.22	42,685	3,967	10,487
7th	53,830	55,123	1,293	2.40	43,360	3,596	11,763
Totals.....		<u>376,814</u>	<u>4</u>		<u>289,234</u>	<u>30,562</u>	<u>87,580</u>

ESD 114

District Summary Report

Director District Number	Ideal Population	Total Population	Deviation from Ideal	% Deviation from Ideal	White Population	Hispanic Origin (of any race)	Non White & Mixed
1st	55,016	53,549	-1,467	-2.67	41,645	4,071	11,904
2nd	55,016	53,631	-1,385	-2.52	36,790	6,655	16,841
3rd	55,016	53,153	-1,863	-3.39	35,266	5,789	17,887
4th	55,016	53,177	-1,839	-3.34	41,810	4,043	11,367
5th	55,016	55,009	-7	-0.01	47,678	2,441	7,331
6th	55,016	53,172	-1,844	-3.35	42,685	3,967	10,487
7th	55,016	55,123	107	0.19	43,360	3,596	11,763
Totals.....		<u>376,814</u>	<u>-8,298</u>		<u>289,234</u>	<u>30,562</u>	<u>87,580</u>

Based on the population deviation of 55016 for the extra 2372 people in the 5th and 7th districts

ESD 114

District Summary Report

Director District Number	Ideal Population	Total Population	Deviation from Ideal	% Deviation from Ideal	White Population	Hispanic Origin (of any race)	Non White & Mixed
1st	53,356	53,549	193	0.36	41,645	4,071	11,904
2nd	53,356	53,631	275	0.52	36,790	6,655	16,841
3rd	53,356	53,153	-203	-0.38	35,266	5,789	17,887
4th	53,356	53,177	-179	-0.34	41,810	4,043	11,367
5th	53,356	55,009	1,653	3.10	47,678	2,441	7,331
6th	53,356	53,172	-184	-0.34	42,685	3,967	10,487
7th	53,356	55,123	1,767	3.31	43,360	3,596	11,763
Totals.....		<u>376,814</u>	<u>3,322</u>		<u>289,234</u>	<u>30,562</u>	<u>87,580</u>

Based on the population deviation of 53356 for the extra 2372 people in the 5th and 7th districts

Summary of Population by Race and Hispanic Origin

District Number	Total Population	Total Population by Race							Two or More Races	Hispanic Origin (of any race)
		Single Race								
		Total	White	Black African American	American Indian and Alaska Native	Asian	Native Hawaiian and Other Pacific Islander	Other Race	Total	
1st	53,549	47,321	41,645	1,120	586	1,995	750	1,225	6,228	4,071
2nd	53,631	47,122	36,790	3,284	827	3,019	737	2,465	6,509	6,655
3rd	53,153	45,916	35,266	2,190	505	5,153	909	1,893	7,237	5,789
4th	53,177	47,876	41,810	523	1,908	2,001	205	1,429	5,301	4,043
5th	55,009	50,751	47,678	272	808	970	88	935	4,258	2,441
6th	53,172	47,523	42,685	709	629	1,621	408	1,471	5,649	3,967
7th	55,123	50,143	43,360	550	4,103	790	81	1,259	4,980	3,596
Totals.....	376,814	336,652	289,234	8,648	9,366	15,549	3,178	10,677	40,162	30,562

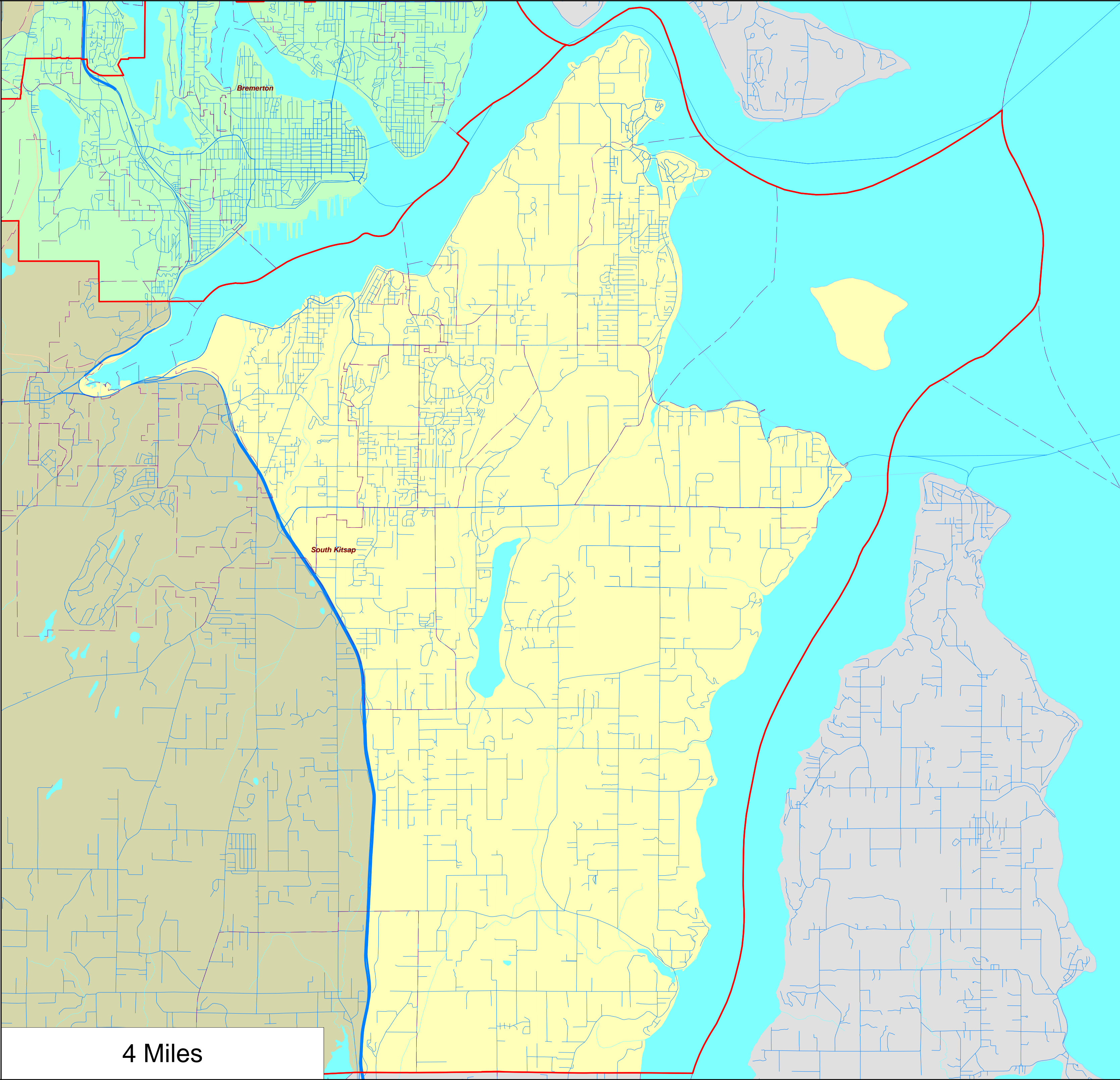
ESD 114 - Proposed Board
Districts as Approximated
Using Census 2020
Geography

- 1st District
- 2nd District
- 3rd District
- 6th District

City Limits

School District
Outline

District Outline



4 Miles

ESD 114 - Proposed Board
Districts as Approximated
Using Census 2020
Geography

- 1st District
- 2nd District
- 3rd District
- 6th District

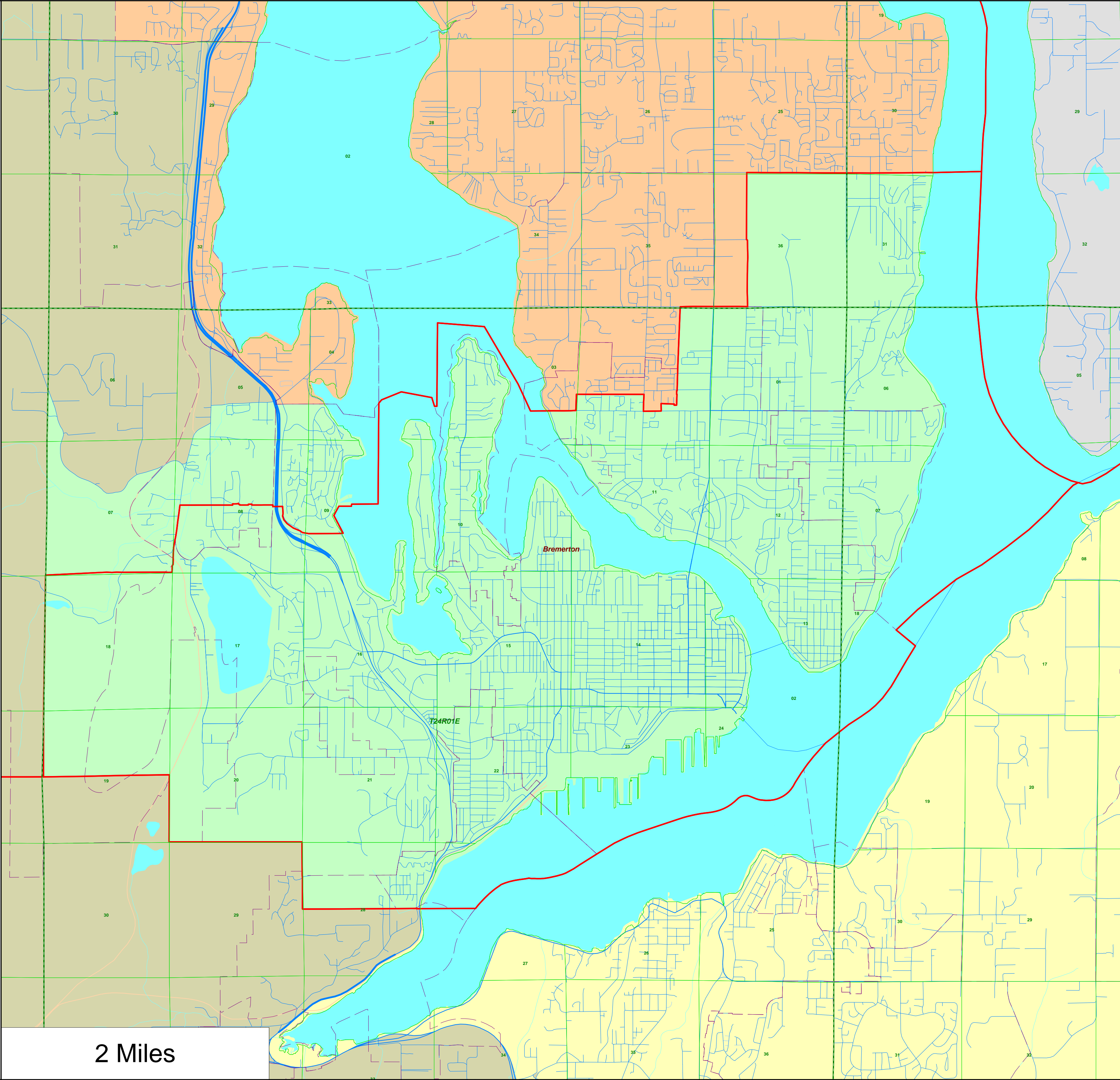
City Limits

School District
Outline

District Outline

Sectional
Centers

Townships



ESD 114 - Proposed Board
Districts as Approximated
Using Census 2020
Geography

- 1st District
- 2nd District
- 3rd District
- 4th District
- 5th District
- 6th District

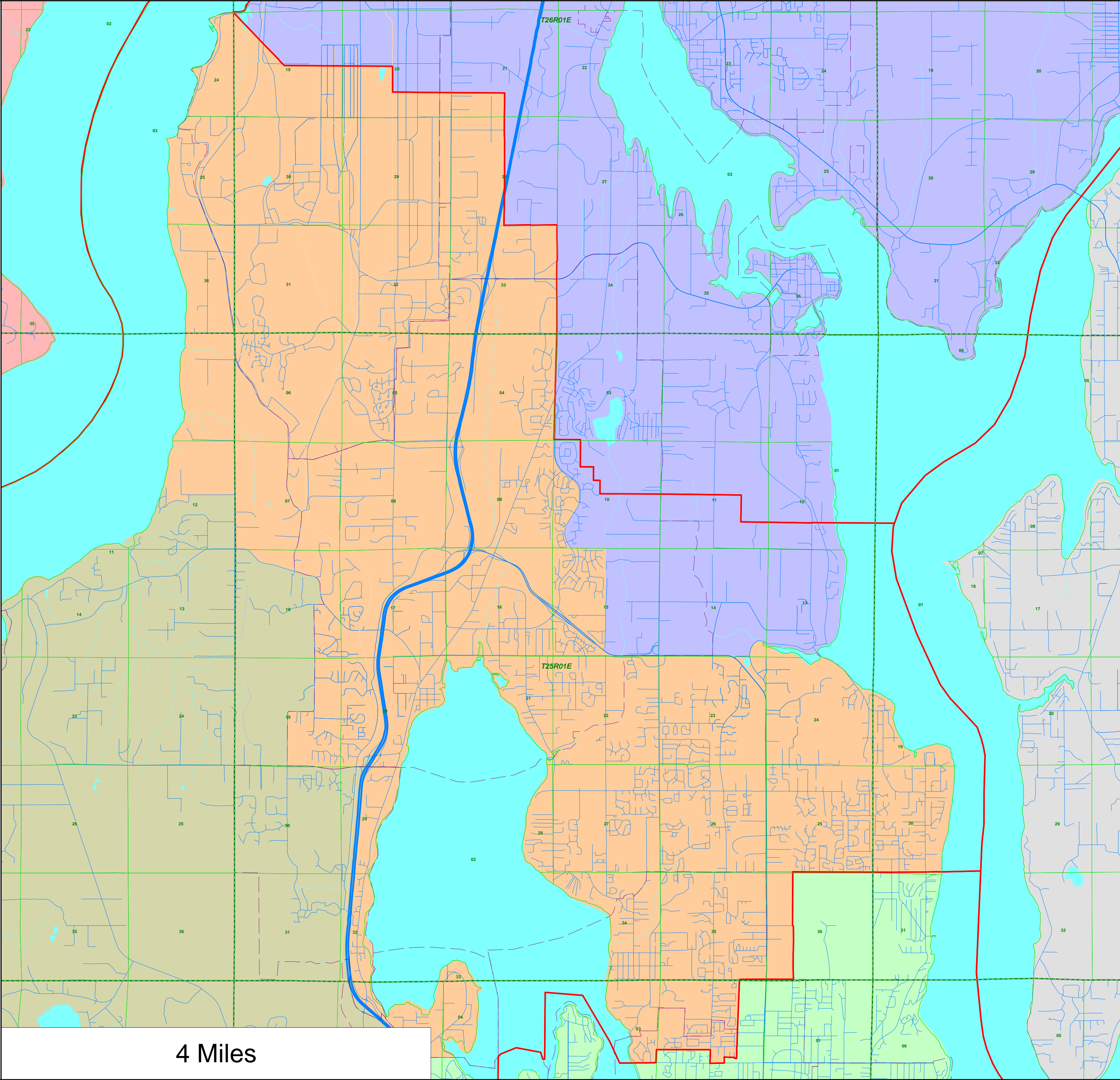
City Limits

School District
Outline

District Outline

Sectional
Centers

Townships



4 Miles

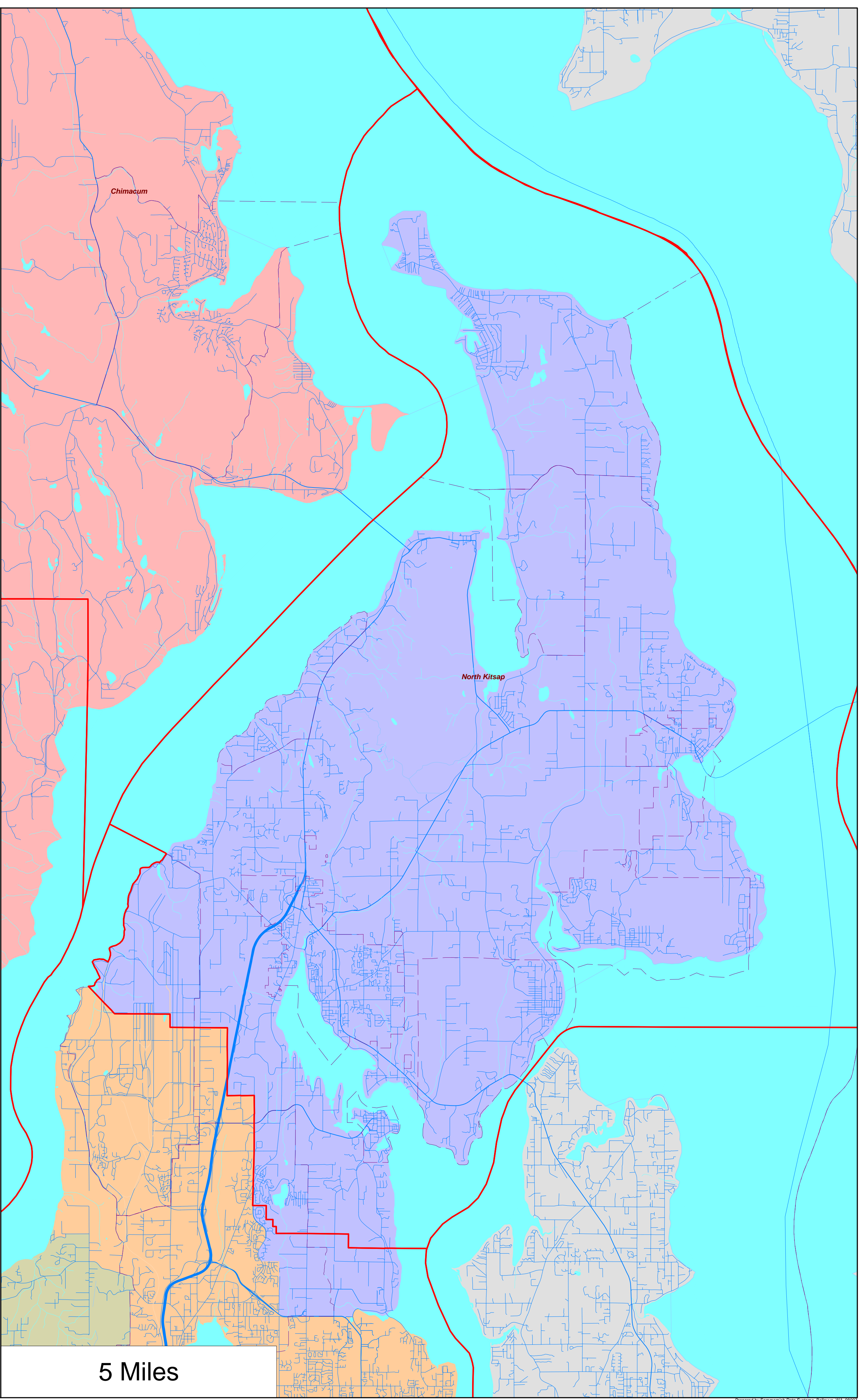
ESD 114 -
Proposed Board
Districts as
Approximated
Using Census 2020
Geography

- 3rd
- 4th
- 5th
- 6th

City
Limits

School
District
Outline

District
Outline



5 Miles

ESD 114 - Proposed Board Districts as Approximated Using Census 2020 Geography

- 1st District
- 2nd District
- 3rd District
- 4th District
- 5th District
- 6th District
- 7th District

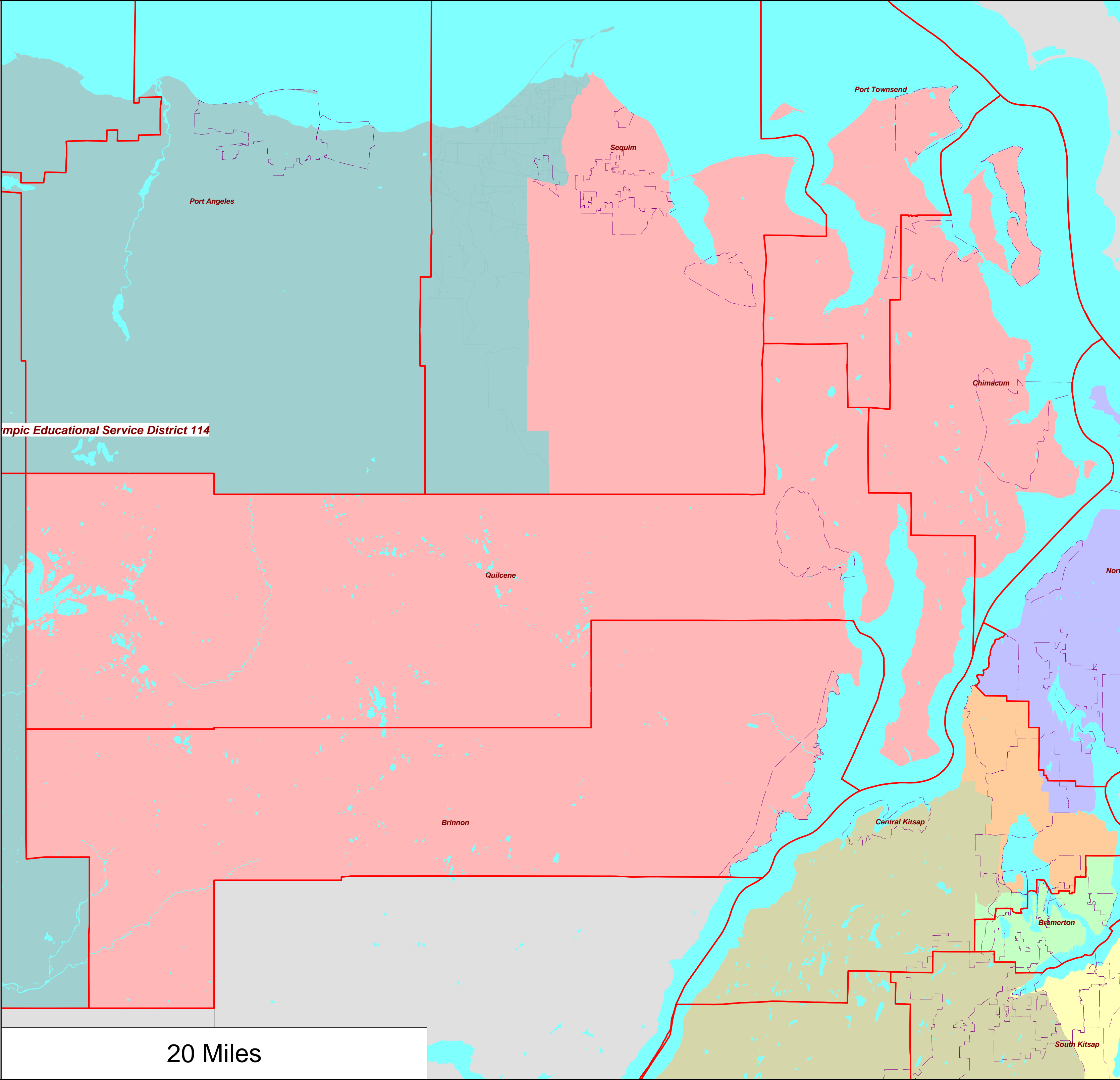
City Limits



School District Outline



District Outline



ESD 114 - Proposed Board
Districts as Approximated
Using Census 2020
Geography

- 1st District
- 2nd District
- 3rd District
- 4th District
- 5th District
- 6th District

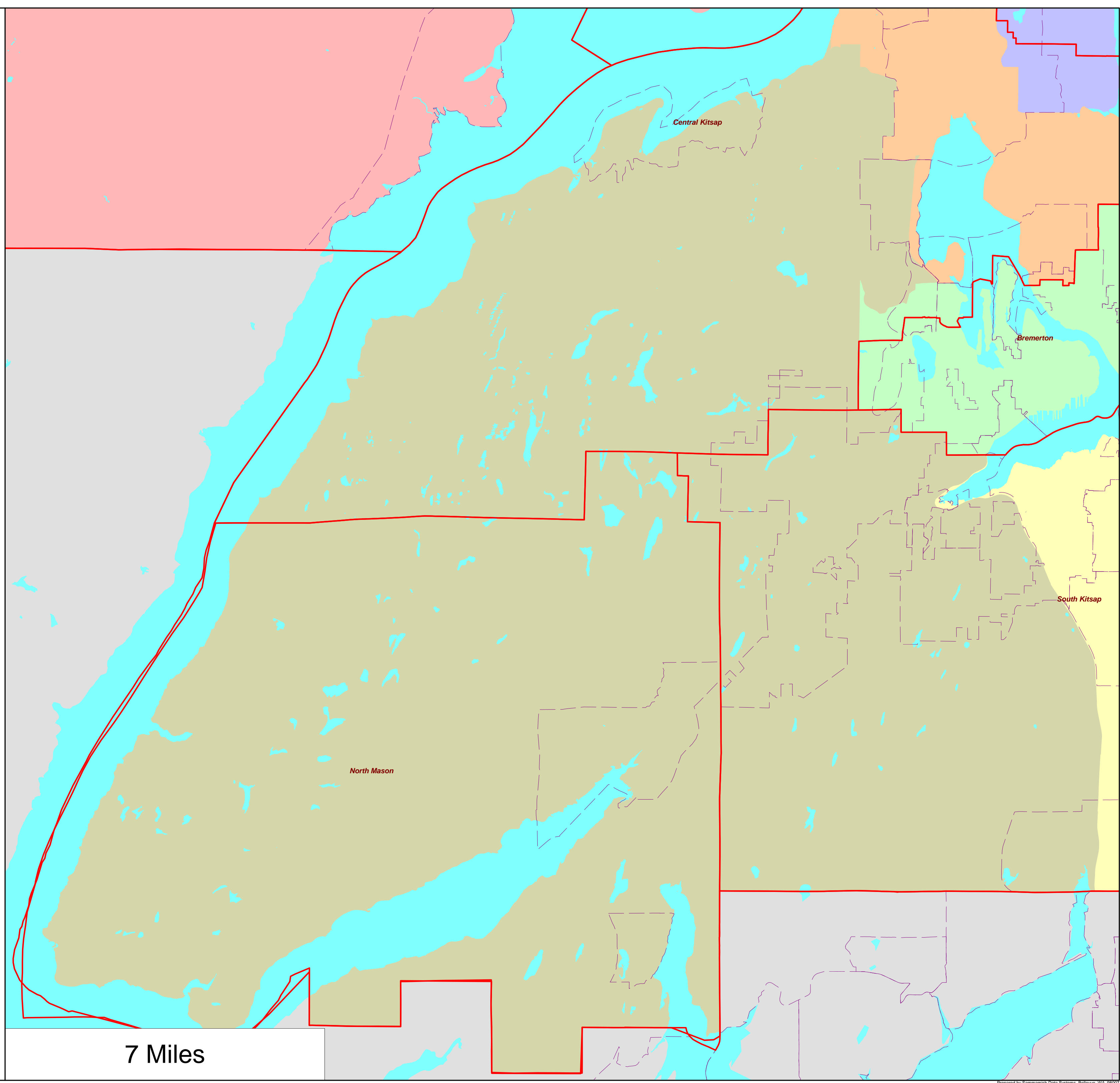
City Limits



School District
Outline



District Outline



7 Miles

ESD 114 - Proposed Board
Districts as Approximated
Using Census 2020
Geography

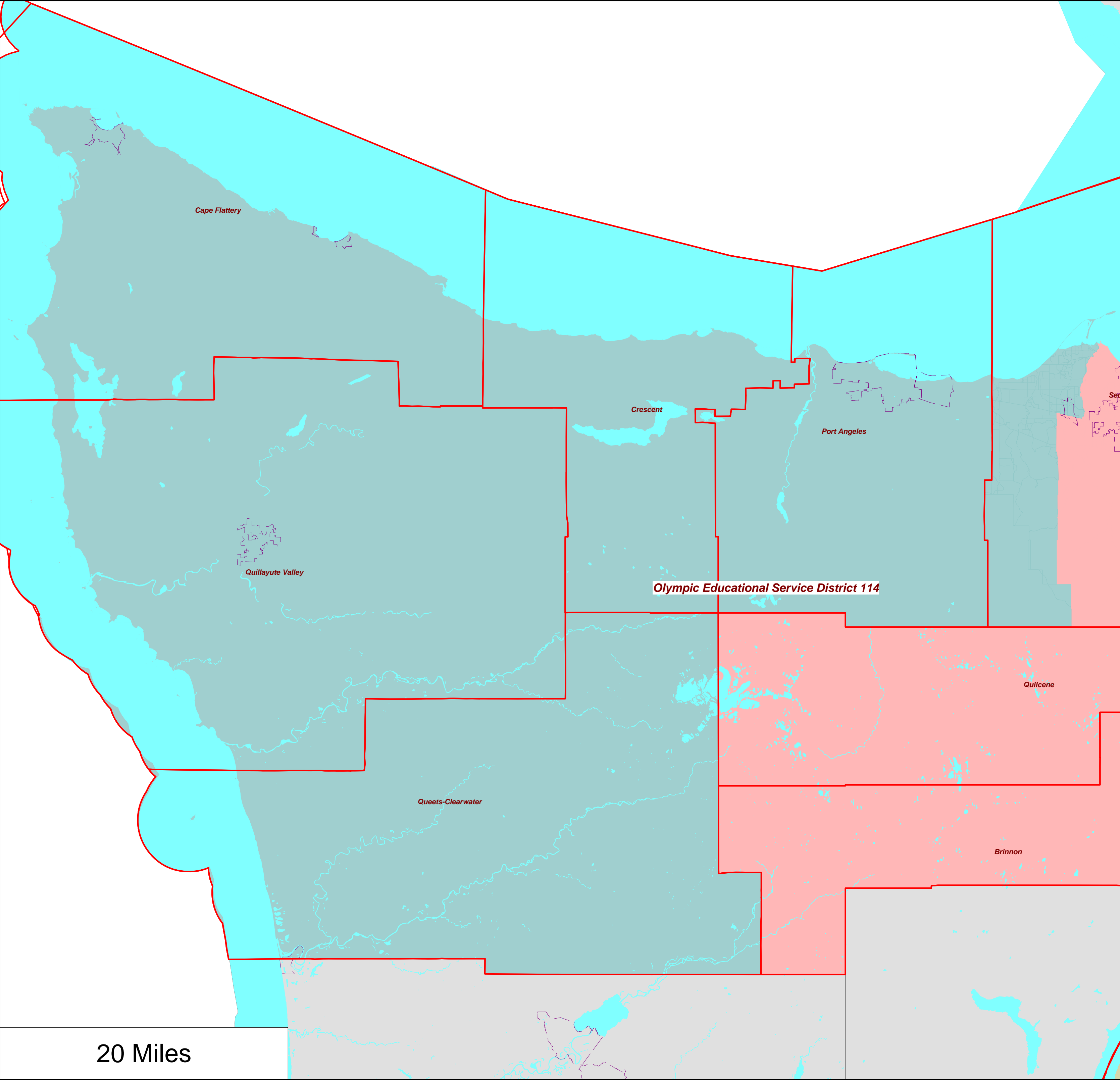
- 5th District
- 6th District
- 7th District

City Limits

School District
Outline

District Outline

20 Miles



ESD 114 - Proposed Board Districts as Approximated Using Census 2020 Geography

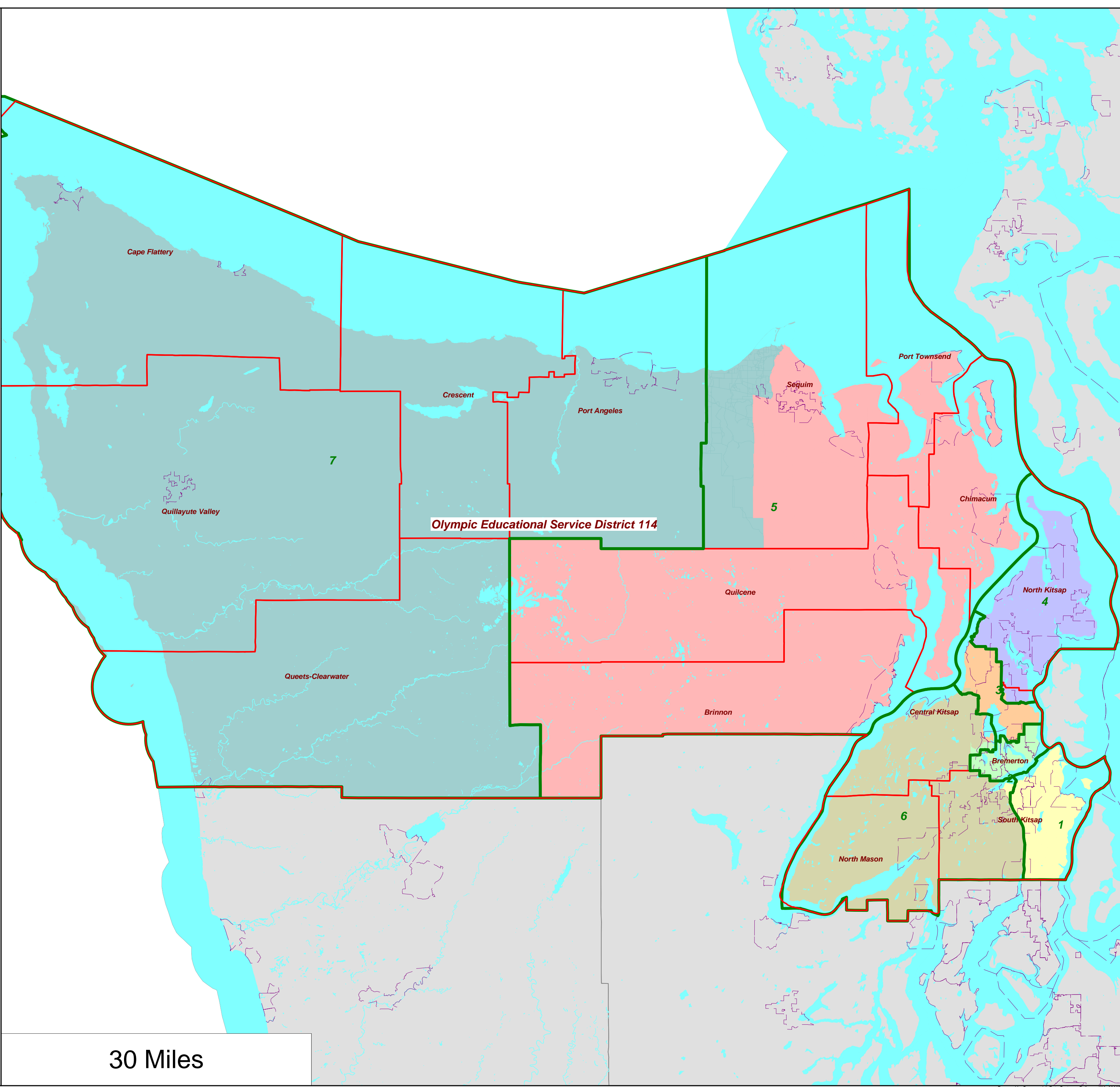
- 1st District
- 2nd District
- 3rd District
- 4th District
- 5th District
- 6th District
- 7th District

City Limits

School District Outline

Previous Director Districts

District Outline



30 Miles

ESD 114 -
Proposed Board
Districts as
Approximated
Using Census 2020
Geography

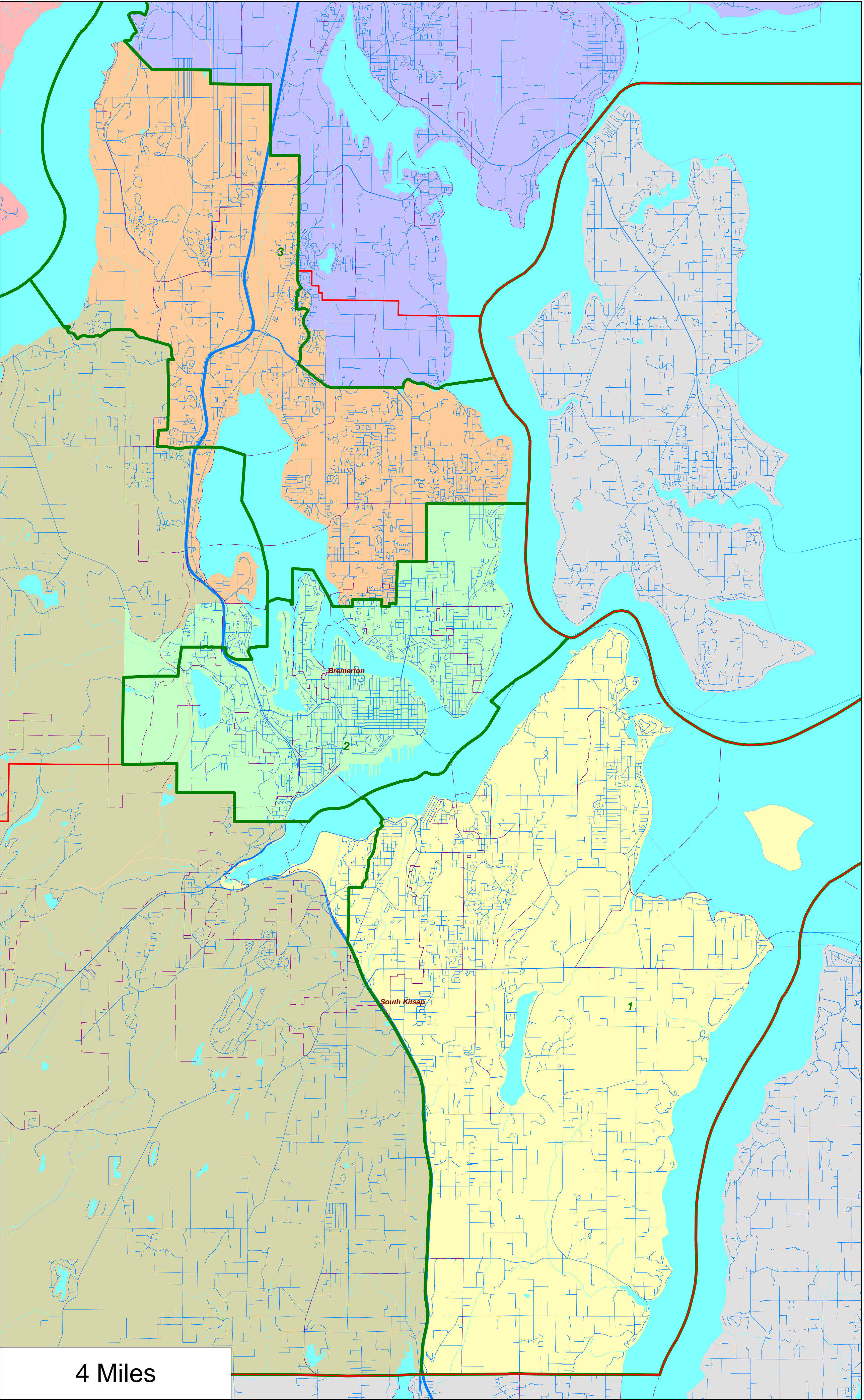
- 1st
- 2nd
- 3rd
- 4th
- 5th
- 6th

City
Limits

School
District
Outline

Previou:
Director
Districts

District
Outline



4 Miles

This map illustrates the Port of Everett, Washington, and its surrounding areas. The city of Everett is shown in the upper left, with major roads like W Harbor Dr and W Earhart Rd. The city of Marysville is in the center, with roads like W Sherman Heights Rd and SW Bay St. The city of Everett is in the lower right, with roads like Port Orchard Blvd and Cline Ave. The map also shows the city of Everett, with roads like SW Cook Rd and SW Old Clifton Rd. The map includes a scale bar indicating 3000 Feet.

3000 Feet

ESD 114 - Proposed
Board Districts as
Approximated Using
Census 2020 Geography

- 2nd District
- 3rd District
- 6th District

City Limits

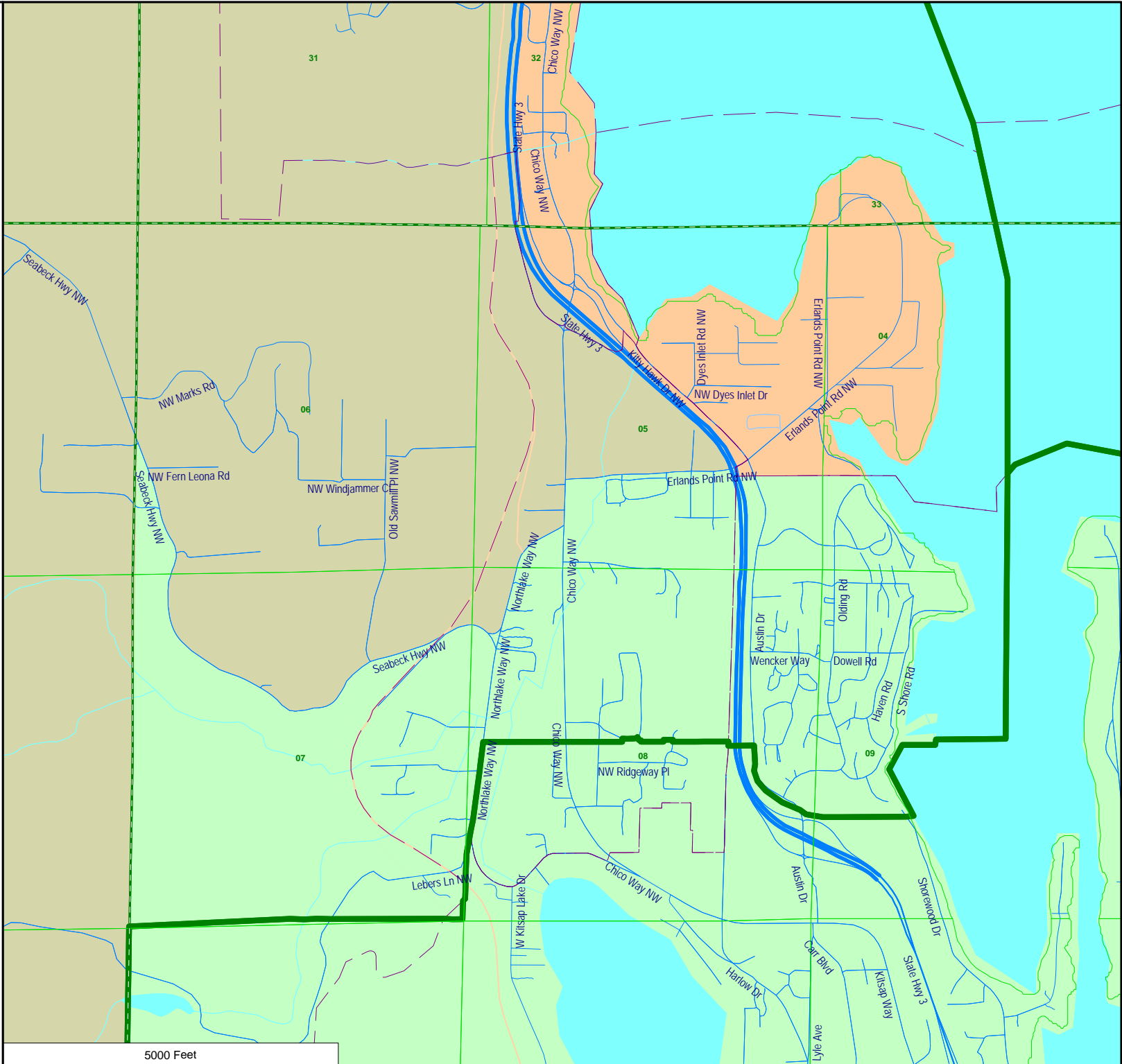
School District
Outline

Previous
Director
Districts

District
Outline

Sectional
Centers

Townships



This map illustrates the proposed Silverdale Loop Road (NW Silverdale Loop Rd NW) in the Silverdale area of Washington. The road is highlighted in green, showing its path from the north near Apex Rd NW, through the center near NW Anderson Hill Rd and NW Bucklin Hill Rd, and extending south towards NW Newberry Hill Rd. The map also shows other major roads such as State Hwy 3, NW Anderson Hill Rd, NW Bucklin Hill Rd, NW Newberry Hill Rd, and NW Eldorado Blvd. A scale bar at the bottom left indicates a distance of 5000 Feet.

Prepared by Sammamish Data Systems, Bellevue, WA 98007

[illegible]

Prepared by Sammamish Data Systems, Bellevue, WA 98007

This map displays a section of the T25R01E township, showing a network of roads and land parcels. A red line highlights a specific area, and a green line highlights another. The map includes labels for various roads, such as Silverdale Way NW, Ridgeloop Blvd NW, and NW Island Lake Pkwy. It also shows a large body of water, NW Island Lake, and a creek, Crouch Crk. The map is divided into sections by a green line, with labels 03, 10, 11, 12, 13, 14, and 15 indicating different areas. A scale bar at the bottom left indicates 5000 Feet.

5000 Feet

ESD 114 - Proposed
Board Districts as
Approximated Using
Census 2020 Geography

5th District
7th District

City Limits

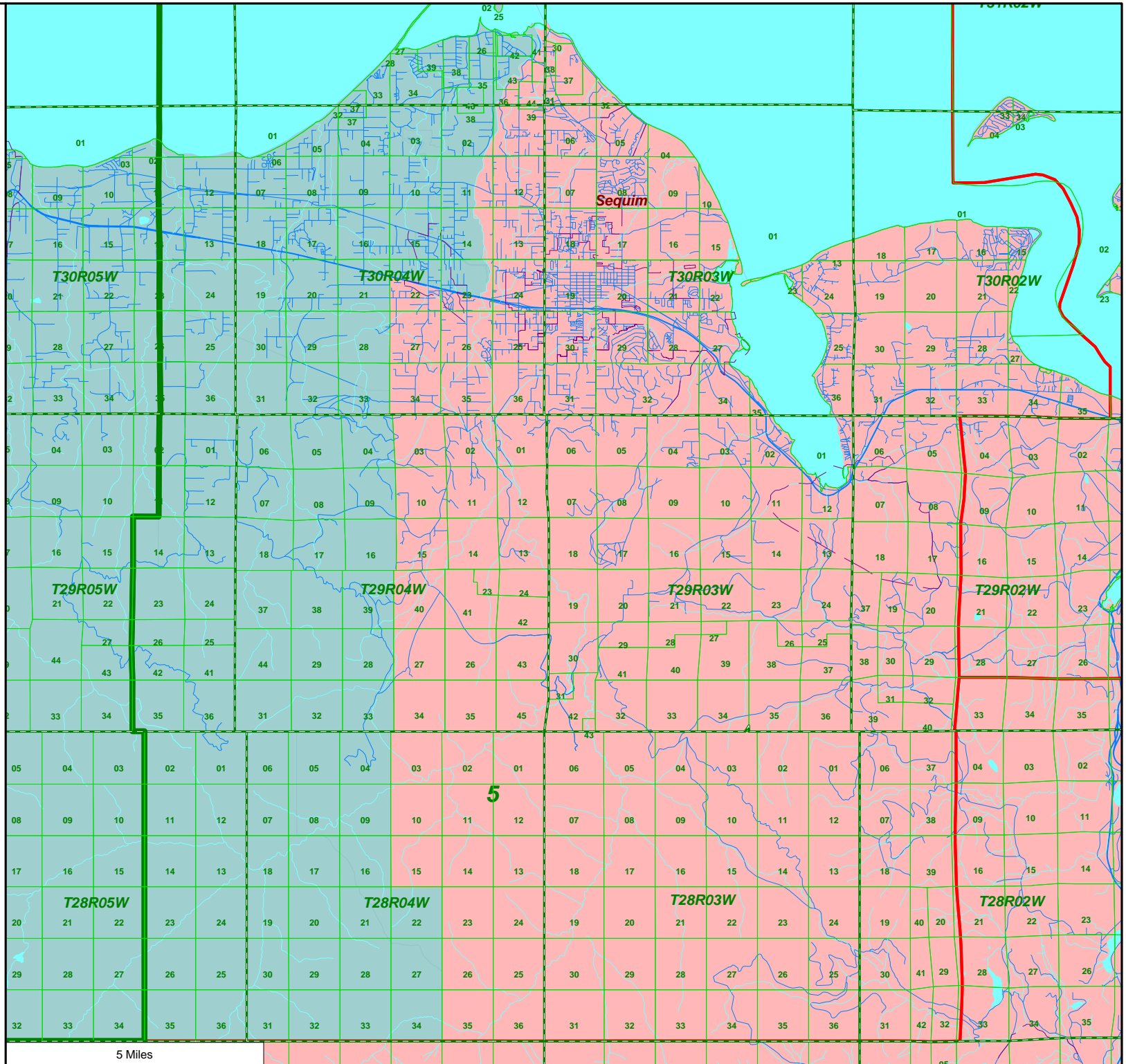
School District
Outline

Previous
Director
Districts

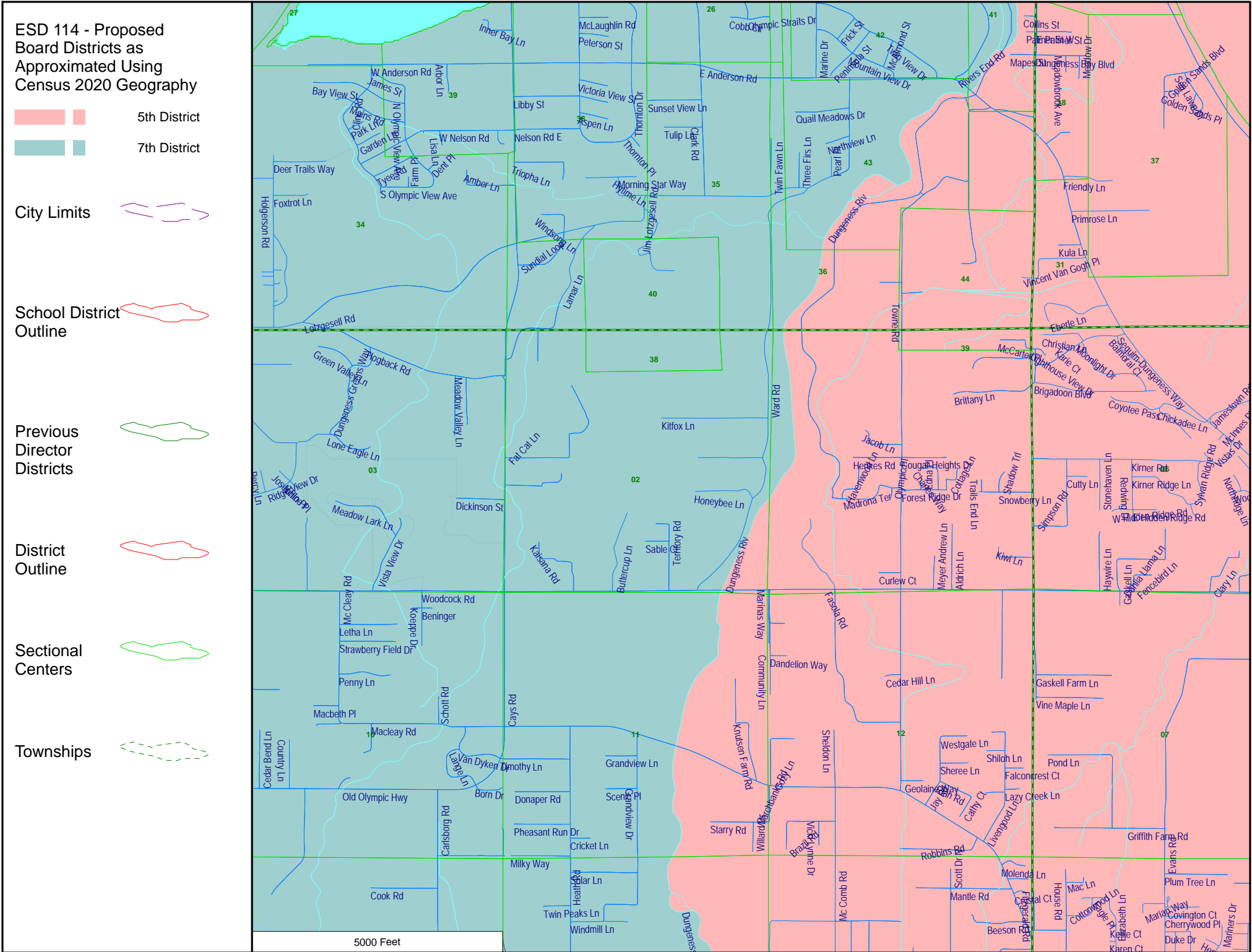
District
Outline

Sectional
Centers

Townships




Prepared by Sammamish Data Systems, Bellevue, WA 98007



ESD 114 - Proposed
Board Districts as
Approximated Using
Census 2020 Geography

-  5th District
-  7th District

City Limits 

School District
Outline 

Previous
Director
Districts 

District
Outline 

Sectional
Centers 

Townships 

